



Senseair

Installation manual  
Sunrise evaluation kit



x1



x1



NOTE:  
ESD sensitive product.  
Use ESD protection equipment.

1

a



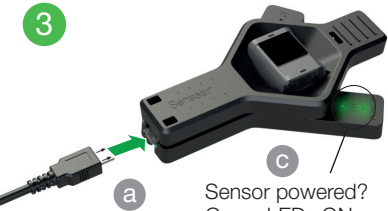
b



2



3



a

c

Sensor powered?  
Green LEDs ON



b

Connect to computer

4

Download software &  
USB Com Cable Driver:



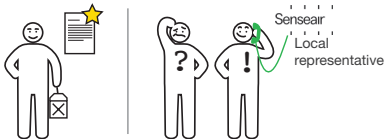
[senseair.com/support/download/software/](https://senseair.com/support/download/software/)

5

Sensor connected?  
Yellow LEDs, Rx/Tx,  
flashes alternately



# IMA8637 Rev 3







Senseair AB (headquarter)  
[www.senseair.com](http://www.senseair.com)



Senseair

AsahiKASEI

