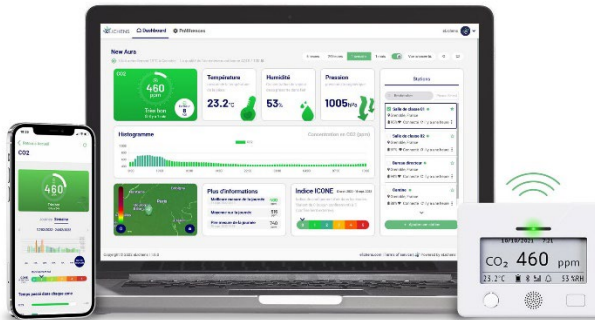


[BACK](#)

FAQ | Aura-CO2

**Do You have questions ?
we have the answers**



+ What is eLichens Aura-CO2 sensor?

Aura-CO2 is an air quality sensor that measures the concentration of carbon dioxide (CO2) in the air, as well as temperature, relative humidity, and atmospheric pressure. It can be used to monitor indoor air quality in buildings such as classrooms for example.

+ What are the technical specifications of the Aura-CO2?

- Measurement range: 0 – 5000ppm
- Accuracy: 30ppm 3% of reading
- Battery lifespan: > 5 years
- Measured Data: CO2, Temperature, Relative Humidity, Atmospheric Pressure
- Technology: Patented eLichens NDIR (Non Dispersive Infrared) ultra-low power consumption dual channel
- Connectivity: LoRaWAN & Bluetooth Low Energy (BLE)

- Device size: 92 x 60 x 30 mm

For more information, please consult the product [datasheet](#).

+ How does the Aura-CO2 monitor work?

The sensor uses NDIR technology, which is the most reliable infrared measurement method for detecting CO2 levels in the air. It then converts this measurement into an electrical signal that is used to display the results on the screen while transmitting them to the mobile app and online dashboards.

+ What are the common applications of the Aura-CO2?

It is mainly used to monitor indoor air quality in public buildings especially schools, hospitals, offices, restaurants, etc. It can also be used in industrial processes, such as food storage and other applications requiring monitoring of carbon dioxide in a closed environment.

+ What are the advantages of an Aura-CO2 sensor compared to other methods of measuring indoor air quality?

- Aura-CO2 sensor works with the most reliable technology on the market, the NDIR equipped with a «double-channel» allowing eLichens' sensor to self-calibrate with high precision.

- Compact design, wall mountable or mobile use possible, equipped with an e-paper display, a buzzer and 3 LED colors (red, orange and green).
- The very low power consumption of the sensor allows a battery life of +5 years, or more depending on usage and settings.
- A standalone product that requires no cables.
- Unique features offered such as Smiley and Power saving modes, predefined configurations, internal menu, dual alarm system (audible and visual) as well as many other parameters allowing custom use by the user.
- Digital ecosystem: easy configuration, unlimited data storage on the cloud accessible via the web and mobile application available at no extra cost. Aura-CO2 can be updated and is therefore able to evolve with the addition of new functions.
- The product is eco-designed, tested, calibrated and validated in France in our laboratory. It therefore has the mention «Made in France».

For more information you can consult the [product datasheet](#).

+ What is the value of installing a CO2 monitor in a school?

The advantage is to measure the levels of carbon dioxide (CO2) in the air of the classroom to ensure an optimal indoor air quality, the sensor indicates the opportune and necessary time to renew the air of the room, this can help improve the health and well-being of students and teachers, as well as increase academic performance.

Aeration and ventilation of the premises helps to limit the spread of COVID19 and other viruses.

Aura-CO2 can also be installed and used for an educational approach for students.

+ Is the Aura-CO2 easy to install?

Yes, the sensor comes with everything you need for quick and easy installation. An anti-theft system with screw is provided, a quick start guide showing you how to proceed and the features of Aura-CO2 as well as the QR Code for mobile applications and online dashboards.

For all support requests regarding the installation of one of your monitors please contact us directly at support@elichens.com

+ How many sensors should be installed per room?

Generally 1 sensor per room, or on larger volumes we recommend 1 sensor every 100/150m2.

+ How much does an Aura-CO2 sensor cost for a school?

Get a quote by email by contacting us directly at info@elichens.com

You can also check for financial aids in your region if available.

+ What CO2 levels are considered healthy for a classroom?

It is generally recommended to maintain CO2 levels below 1000 ppm (parts per million) to ensure optimal indoor air quality. Levels above 1000 ppm may be associated with symptoms such as drowsiness, headaches and decreased ability to concentrate.

The sensor must also be able to calculate the ICONE index, which is a French index of good air renewal in a room.

Aura-CO2 pre-registered CO2 levels thresholds are defined according to official French recommendations and are subject to change. We have made these changes directly accessible by the user via his mobile application, or remotely via the LoRaWAN network. Both the ICONE index and the new Air-score are available on the Aura-CO2 online dashboard.

The recommended CO2 thresholds may also vary depending on the country's regulations.

+ How long does it take to ventilate the room?

We recommend venting a room for about 15 to 20 minutes every hour to renew the air and stay within the recommended CO2 thresholds. However, the duration of ventilation will depend on factors such as the size of the room, the number of people present, and the activities carried out there.

It is also important to monitor CO2 levels in the air to ensure that ventilation levels are sufficient to maintain healthy air quality.

+ How do I view my CO2 data?

You can see your data in several ways:

On the Aura-CO2 sensor:

- Aura-CO2 is equipped with an e-paper screen constantly displaying the CO2 level of the room in which it is located, you can update the measurement by pressing the user button at the bottom of the screen once. The measurement is by default updated every minute.
- The CO2 level can also be displayed with the Smiley mode, which is easier to read with the 3 faces each corresponding to a certain CO2 level.

Online:

- On your personal eLichens dashboard accessible through my.elichens.com
- On the dedicated Aura-CO2 mobile app available on [iOS](#) & [Android](#).

Note: If you already use the Aura-CO2 smartphone app, you can connect to the web dashboard using the same account.

+ Is it necessary to calibrate the Aura-CO2 monitor?

No, it is not necessary to perform a calibration with our technology, the sensor automatically recalibrates.

Recalibration is however possible from the advanced settings of the Aura-CO2 mobile application or remotely via the LoRaWAN network. Please contact us directly so that the procedure to be followed is done correctly.

+ Is it possible to connect Aura-CO2 to an air quality management system for real-time monitoring?

Yes, Aura-CO2 has its own air quality management and monitoring system, accessible directly online for users at my.elichens.com and on smartphone with the Aura-CO2 app available on [iOS](#) and [Android](#).

+ Where do I install my Aura-CO2?

Preferred installation position is in the "breathing zone" of the occupants is between 1m20 and 1m80 from the ground. Mounted on a wall with the anti-theft system included or mobile on a piece of furniture away from the occupants' airways.

Avoid locations too close to windows, ventilation/air conditioning, direct breathing of occupants, outside breathing area.

+ Is there an alarm system?

Yes, Aura-CO2 has a visual alarm on the monitor screen and an audible alarm (can be turned off).

The monitor alerts users when levels become high and exceed recommended thresholds, which may indicate insufficient air renewal in the room.

+ Where can I find the Aura-CO2 user manual?

Our user manual is [available here](#).

Also includes the Data Sheet, Quick Start Guide and links to the Dashboard and Mobile Apps.

+ How long does Aura-CO2 last?

Aura-CO2 works with a battery life of about 5 years, depending on product usage. It can gain autonomy if the configuration is optimized (LED adjustment, energy saving mode, frame sending frequency, buzzer, etc.)

The life of the eLichens NDIR sensor is approximately 20 years.

The product legal warranty period is 2 years.

+ Does Aura-CO2 require an Internet connection?

Aura-CO2 exists in a Bluetooth-only version and can therefore operate without an Internet connection, only by Bluetooth Low Energy to transfer data to the mobile application when necessary.

However, it is better to use the connected Aura-CO2 version to avoid manual transfer. It is done automatically by the LoRaWAN connectivity (running on a low consumption wide area network). No WiFi is required.

For more information on Aura-CO2 connectivity you can contact us at: info@elichens.com

+ What are Aura-CO2 certifications?

Aura-CO2 sensor is certified Made in France, CE, and FCC.

+ How can I contact the customer service?

For any requests, please contact us by email at info@elichens.com or with the phone number listed on your Quick Start Guide.

+ How to maintain the Aura-CO2 sensor?

We recommend for the Aura-CO2 NDIR (Non-Dispersive InfraRed) sensor:

- Avoid extreme temperature or humidity to avoid damage to the sensor.
- Avoid direct exposure to bright light sources or direct sunlight to avoid disturbance of the measurement.
- Avoid contact with chemicals or solvents that can damage the sensor.

+ Is Aura-CO2 water resistant?

No, Aura-CO2 is not water resistant. Our CO2 sensor is designed for use in dry indoor environments. It is important to protect the device from moisture and splash to avoid damage or malfunction.

[← BACK](#)

You did not find your answer?

contact us directly below